

Willow Tree Primary School

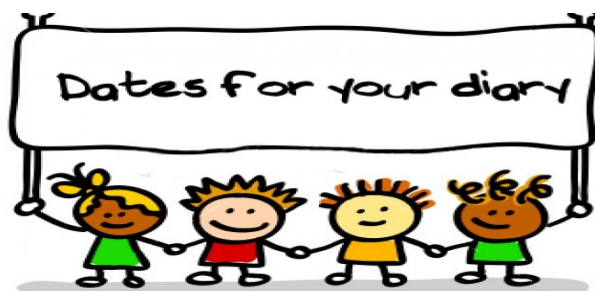
Newsletter 20th October 2022

Tel: 01423 883551

Email: admin@willowtree.n-yorks.sch.uk

Website: www.willowtree.n-yorks.sch.uk

Headteacher: Dr Helen Davey



INSET– Fri 21st Oct
Re-open– Mon 31st Oct
School Photographs - Mon 31st Oct
Parents Evening– Tues 1st Nov
Parents Evening– Thurs 3rd Nov
‘Odd Sock Day’ - Mon 14th Nov
Break up– Fri 16th Dec
Re-open– Tues 3rd Jan

Parents Evening...

The dates for parents evening are:

Tuesday 1st November: 3.30pm-6pm

Foundation Stage and Lower KS2 Virtual

KS1 and Upper KS2 In Person

Thursday 3rd November: 3.30pm-6pm

Foundation Stage and Lower KS2 In Person

KS1 and Upper KS2 Virtual

If you have any safeguarding concerns about a child that attends Willow Tree, please contact Helen Davey (Headteacher), James Hughes (Deputy Head) or Karen Daggett (Deputy Head)



Primary and Secondary School Applications...

The **PRIMARY SCHOOL** application round will open no later than **12 October 2022** and the deadline to apply is **15 January 2023**.

The **SECONDARY SCHOOL** application round will open no later than **12 September 2022** and the deadline to apply is **31 October 2022**.

Please ensure when you're applying for schools that you give yourself a few choices and not just your main choice, this is because if you don't get your first choice and have no other options, admissions chooses a school for you which could be anywhere in North Yorkshire.

Please follow the link below for the online application process:

<https://www.northyorks.gov.uk/apply-place-primary-or-secondary-school>

School Photographs

A reminder that individual school photographs are on the first day back after half term, Monday 31st October.



If you have any safeguarding concerns about a child that attends Willow Tree, please contact Helen Davey (Headteacher), James Hughes (Deputy Head) or Karen Daggett (Deputy Head)



Anti-Bullying Week
Week Commencing Monday 14th November

The week beginning 14th November is Anti Bullying Week, with the focus on **Reach Out**.

On Monday 14th November staff and children are asked to wear odd socks in support and recognition of individuality.



ParentPay



Please ensure your ParentPay account is up to date and any outstanding lunch debt is cleared before we come back after half term.

Apologies, but lunches have not been updated on ParentPay this week and we hope to catch up with this after half term. If your child has had school lunches this week please credit your ParentPay account.

If you have any safeguarding concerns about a child that attends Willow Tree, please contact Helen Davey (Headteacher), James Hughes (Deputy Head) or Karen Daggett (Deputy Head)

Dates for your Diary

Monday 31st October	Parents Evenings 3.30 - 6 FS and LKS2 Virtual KS1 and UKS2 In Person
Thursday 3rd November	Parents Evenings 3.30 – 6 FS and LKS2 In Person KS1 and UKS2 Virtual
Mon 12th December	Y4 Christmas Party
Wed 14th December	Y3 Christmas Party
Wed 14th December	Y2 Party
Wed 14th December	Y1 Party
Wed 14th December	Y3 Performance 6pm - Information to follow
Thurs 15th December	Nursery Party
Thurs 15th December	YR Party
Friday 16th December	Y 5/6 Christmas Party
Friday 16th December 10am	Foundation Stage Production FS1 and FS2 only (2 tickets per family) Information to follow
Monday 9th January	Y6 SATs Meeting for Parents 6pm
Thursday 9th February	Y5/6 Sex and Relationships Education information meeting for parents 6pm
Friday 10th February	INSET Day
Thursday 2nd March	Y4 Multiplication check information for parents
Friday 31st March	Annual Reports to parents
Monday 8th May	Y6 SATs week
Thursday 25th May	Y4 Sex and Relationships Education meeting for parents 6pm
Monday 5th June	Parents Evenings 3.30 - 6 FS and LKS2 Virtual KS1 and UKS2 In Person
Thursday 8th June	Parents Evenings 3.30 – 6 FS and LKS2 In Person KS1 and UKS2 Virtual
Monday 26th June	INSET Day
Thursday 13th July	Transition Meetings for Parents Year 1 and 2 6pm Years 3-6 6.45pm
w/c 17th July	Sports Week
Tuesday 16th July	Y6 Production 6pm
Wednesday 19th July	Sports Day

If you have any safeguarding concerns about a child that attends Willow Tree, please contact Helen Davey (Headteacher), James Hughes (Deputy Head) or Karen Daggett (Deputy Head)