

Willow Tree Primary School

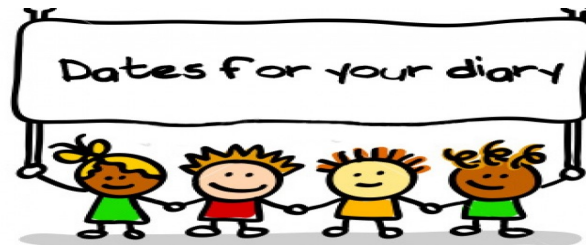
Newsletter 7th October 2022

Tel: 01423 883551

Email: admin@willowtree.n-yorks.sch.uk

Website: www.willowtree.n-yorks.sch.uk

Headteacher: Dr Helen Davey



Flu Immunisations (Rec-Yr6)- **Thurs 20th Oct**
Break up- **Thurs 20th Oct**
INSET- **Fri 21st Oct**
Re-open- **Mon 31st Oct**
Parents Evening- **Tues 1st Nov**
Parents Evening- **Thurs 3rd Nov**
Break up- **Fri 16th Dec**
Re-open- **Tues 3rd Jan**

Parents Evening...

The dates for parents evening are:

Tuesday 1st November: 3.30pm-6pm

Foundation Stage and Lower KS2 Virtual

KS1 and Upper KS2 In Person

Thursday 3rd November: 3.30pm-6pm

Foundation Stage and Lower KS2 In Person

KS1 and Upper KS2 Virtual

Keep an eye out for the booking system going live next week with more information.

If you have any safeguarding concerns about a child that attends Willow Tree, please contact Helen Davey (Headteacher), James Hughes (Deputy Head) or Karen Daggett (Deputy Head)

Primary and Secondary School Applications...

The **PRIMARY SCHOOL** application round will open no later than **12 October 2022** and the deadline to apply is **15 January 2023**.

The **SECONDARY SCHOOL** application round will open no later than **12 September 2022** and the deadline to apply is **31 October 2022**.

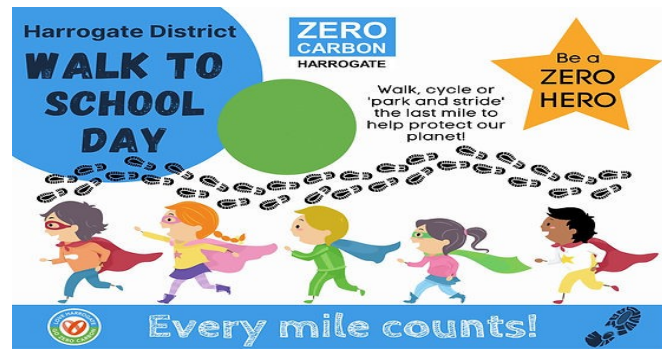
Please ensure when you're applying for schools that you give yourself a few choices and not just your main choice, this is because if you don't get your first choice and have no other options, admissions chooses a school for you which could be anywhere in North Yorkshire.

Please follow the link below for the online application process:

<https://www.northyorks.gov.uk/apply-place-primary-or-secondary-school>



If you have any safeguarding concerns about a child that attends Willow Tree, please contact Helen Davey (Headteacher), James Hughes (Deputy Head) or Karen Daggett (Deputy Head)



Thank you all for another successful walk to school day. It has been wonderful to hear children excited about their walking journey to school and hearing their walk to school stories!

A huge well done to everyone who took part and did their bit to help the planet. A special mention to Tilly in Hornbeam class who counted how many steps she had walked to school (with the help of Dad), a whopping 1100 steps.

We are proudly displaying our walk to school certificate in our classrooms.



If you have any safeguarding concerns about a child that attends Willow Tree, please contact Helen Davey (Headteacher), James Hughes (Deputy Head) or Karen Daggett (Deputy Head)

Special Achievements...



Elizabeth in lime class has achieved her white with a yellow stripe belt in martial arts after starting at the end of July.

Well done!!

Oliver from Hornbeam would like to share his achievement from the weekend.

He passed the green/black belt grading with merit.

Great work!!



Amazing achievements, you should be proud of yourselves!

If you have any safeguarding concerns about a child that attends Willow Tree, please contact Helen Davey (Headteacher), James Hughes (Deputy Head) or Karen Daggett (Deputy Head)

Does this look like the job for you?

Midday Supervisory Assistant

Willow Tree Primary School

Band B Point 2 Term Time Only

Variable Hours 7- 10 hours per week (starting at 10)

Permanent post required as soon as possible to support children at lunchtime

The governors, staff and children at Willow Tree Primary School, Harrogate wish to appoint an MSA to join our team as soon as possible.

We want our new member of staff to be:

- **Someone who enjoys being with the children in the dining hall.**
- **Someone who enjoys organising games for the children to play in the playground.**

Closing date: Wednesday 12th October

Please email: headteacher@willowtree.n-yorks.sch.uk for an information pack on applying for this role!

We can't wait to have a new member to our amazing Willow Tree Family!



If you have any safeguarding concerns about a child that attends Willow Tree, please contact Helen Davey (Headteacher), James Hughes (Deputy Head) or Karen Daggett (Deputy Head)

Specific dates for your diary's until the end of the school year...

✚ Dates for the Year so far – 6/10/22

Thursday 20 th October	PTFA Monster Bash – please help if you can
Friday 21 st October	INSET Day – School Closed
Monday 31 st October	Parents Evenings 3.30 - 6 FS and LKS2 Virtual KS1 and UKS2 In Person
Thursday 3 rd November	Parents Evenings 3.30 – 6 FS and LKS2 In Person KS1 and UKS2 Virtual
w/c 12 th December	Christmas Parties
Mon 12 th	Y4 Christmas Party
Wed 14 th	Y3 Christmas Party
Wed 14 th	Y2 Christmas Party
Wed 14 th	Y1 Christmas Party
Wed 14 th 6pm	Y3 Performance
Thurs 15 th	Nursery Christmas Party
Thurs 15 th	YR Christmas Party
w/c 12 th December	Y3 Production – 6pm
Friday 16 th	Y 5/6 Christmas Party
Friday 16 th December 10am	Foundation Stage Production FS1 and FS2 only (2 tickets per family)
Monday 9 th January	Y6 SATs Meeting for Parents 6pm
Thursday 9 th February	Y5/6 SRE information meeting for parents 6pm
Friday 10 th February	INSET Day – School Closed
Friday 24 th February	All Reports to Helen
Thursday 2 nd March	Y4 MTC (check information meeting for parents)
w/c 20 th March	TA PM
Friday 31 st March	Reports out
Monday 8 th May	Y6 SATs week
Thursday 25 th May	YR New Parents Meeting 6.30pm
Thursday 25 th May	Y4 SRE meeting for parents 6pm
Monday 5 th June	Parents Evenings 3.30 - 6 FS and LKS2 Virtual KS1 and UKS2 In Person
Thursday 8 th June	Parents Evenings 3.30 – 6 FS and LKS2 In Person KS1 and UKS2 Virtual
Monday 26 th June	INSET Day – School Closed
Wednesday 12 th July	Transition pm
Thursday 13 th July	Transition Day Transition Meetings 6 and 6.45pm
Friday 14 th July	Transition Day
w/c 17 th July	Sports week
w/c 17 th July	Y6 Production
Wednesday 19 th July	Sports Day

If you have any safeguarding concerns about a child that attends Willow Tree, please contact Helen Davey (Headteacher), James Hughes (Deputy Head) or Karen Daggett (Deputy Head)

Champions Assembly

The following children were recognised as Class Champions in this week's Champions Assembly.

Ash	Jack	Cedar	Evie	Silver Birch
Chestnut	Alfie	Maple	Omer	Walnut
Holly	Charlie	Rowan	Lily	Acer
Cherry	Jack	Sycamore	Dolly	
Hornbeam	Rocco	Elm	Reuben L	
Lime	Peter	Hawthorn		
Spruce	William R	Larch		



Well done to all of you!

If you have any safeguarding concerns about a child that attends Willow Tree, please contact Helen Davey (Headteacher), James Hughes (Deputy Head) or Karen Daggett (Deputy Head)